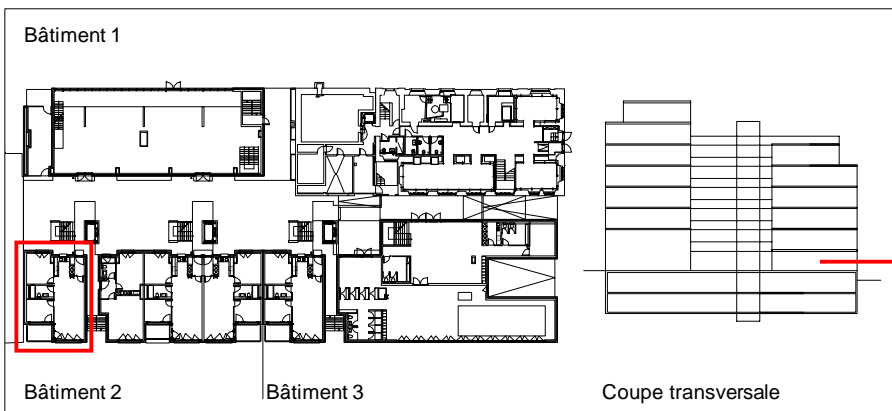
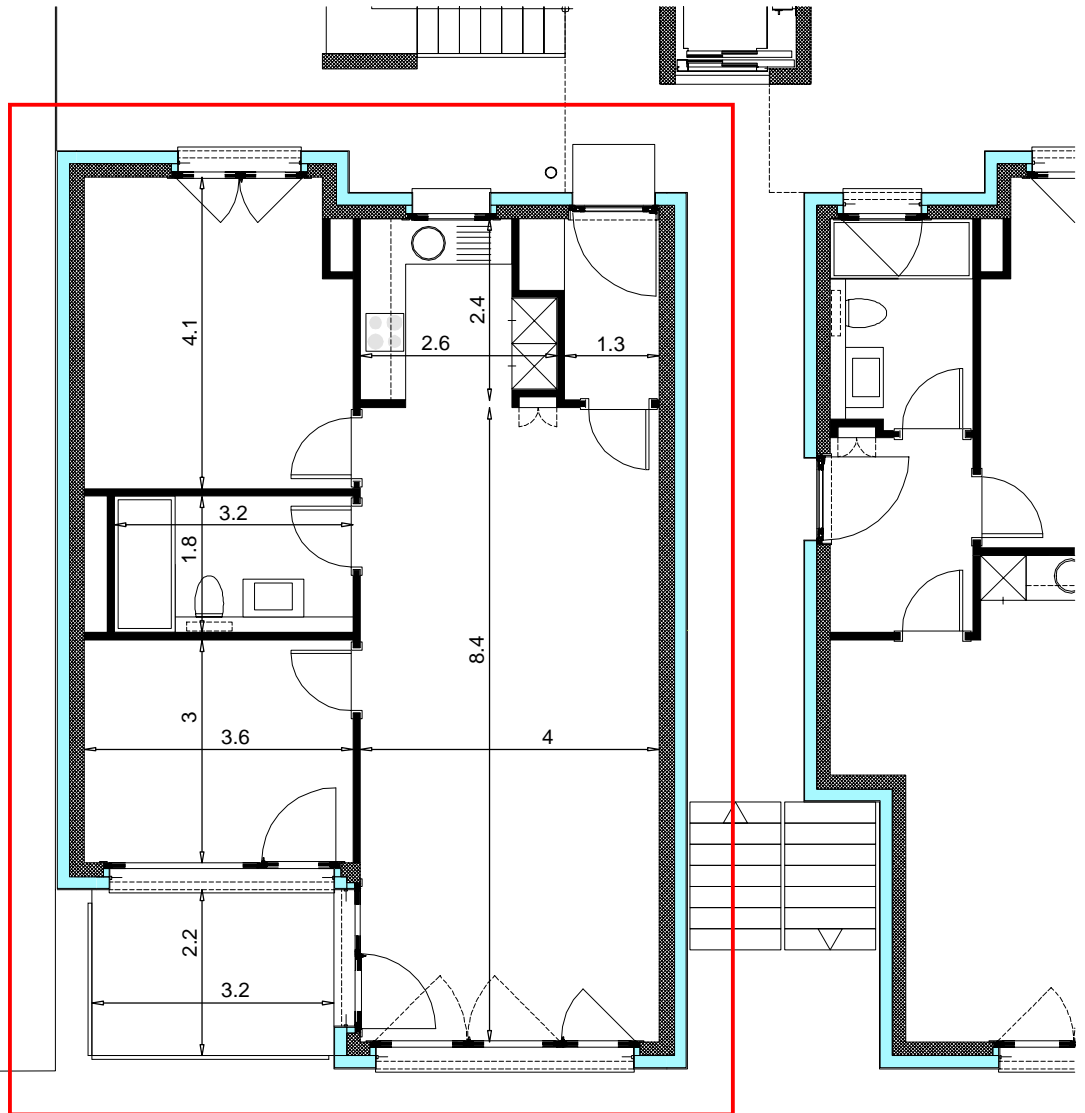


PPE N° : B20001
Appartement 3.5 pces



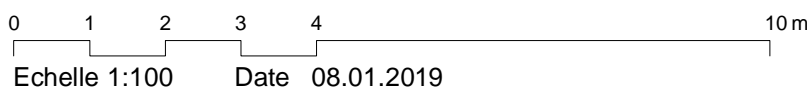
SNH	72.67 m ²
Surface Nette Habitable	
+ SCI	1.97 m ²
Surface Construction Intérieure	
= SH	74.64 m ²
Surface Habitable	
Balcon-Loggia (0.00 => 50%)	0.00 m ²
Terrasse (7.04 => 33%)	2.32 m ²
+ SE	2.32 m ²
Surface Externe	
= SVN	76.96 m ²
Surface de Vente Nette	

Date d'impression : 09.01.2019 - Format d'impression A4 (21 x 29.7)

Krüger & Kazan

LR111 _ Avenue Léopold-Robert 111

Fiche PPE



Echelle 1:100

Date 08.01.2019