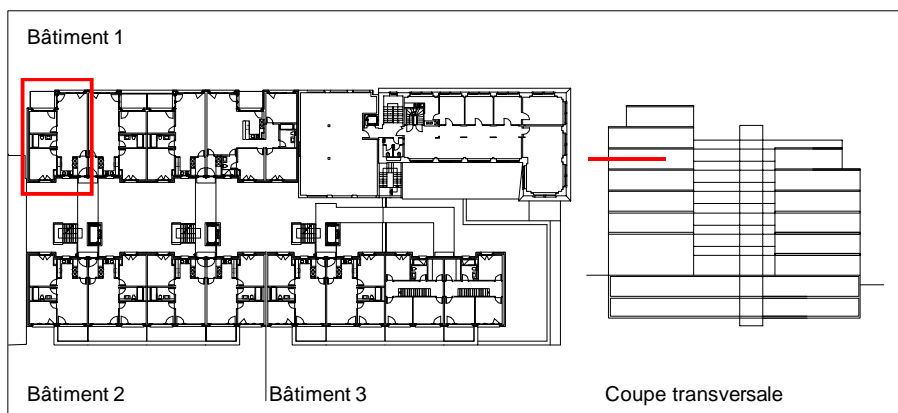
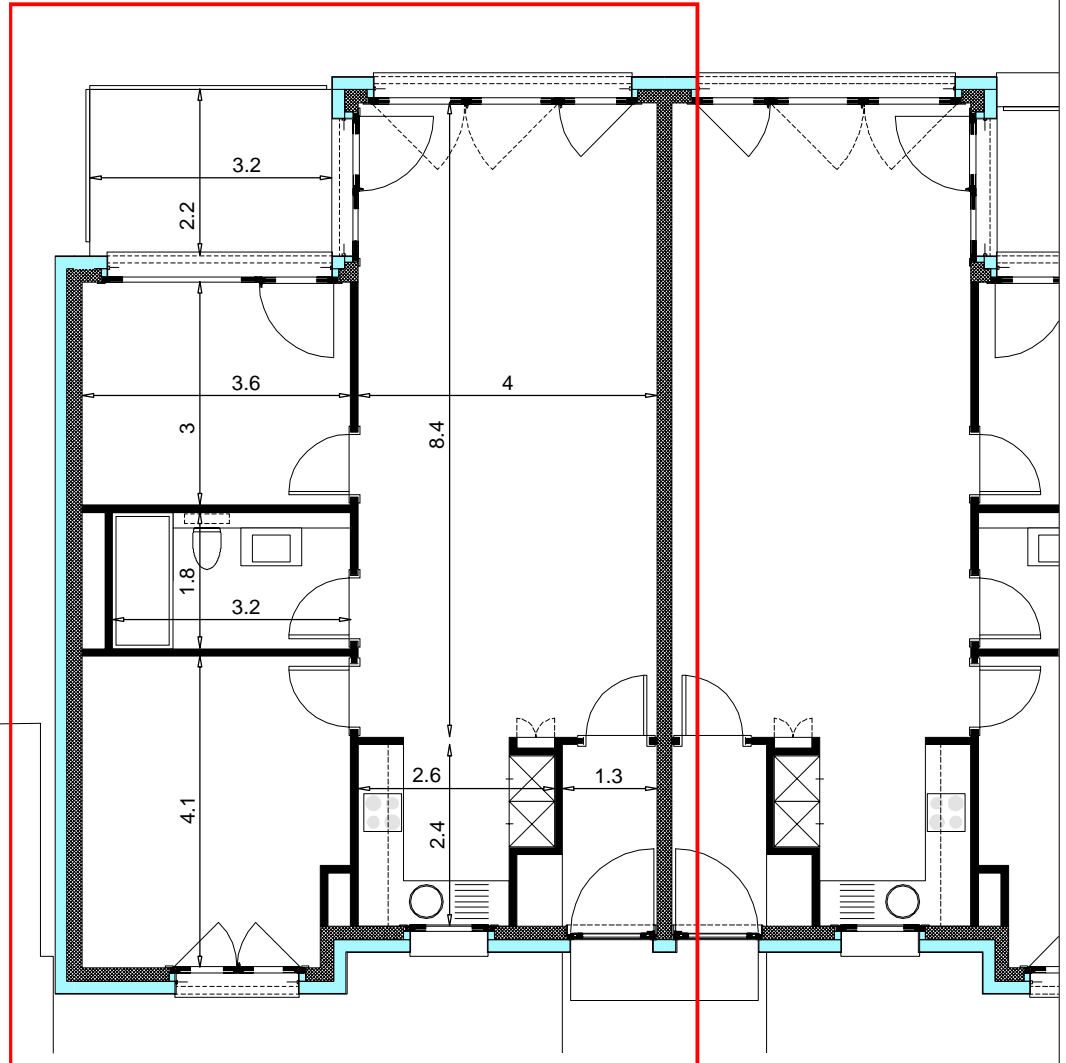


PPE N° : **B10504**
 Appartement 3.5 pces



SNH	Surface Nette Habitable	72.67 m²
+ SCI	Surface Construction Intérieure	1.97 m²
= SH	Surface Habitable	74.64 m²
	Balcon-Loggia (7.04 => 50%)	3.52 m ²
	Terrasse (0.00 => 33%)	0.00 m ²
+ SE	Surface Externe	3.52 m²
= SVN	Surface de Vente Nette	78.16 m²

Date d'impression : 08.01.2019 - Format d'impression A4 (21 x 29.7)

Krüger & Kazan

LR111 _ Avenue Léopold-Robert 111

Fiche PPE

