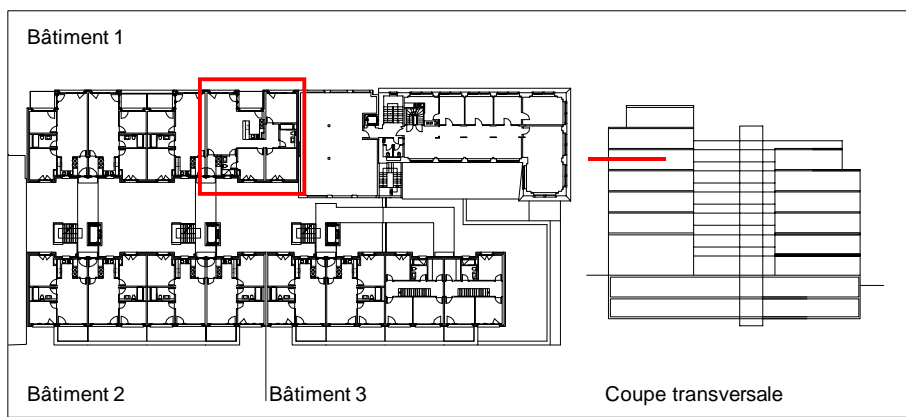
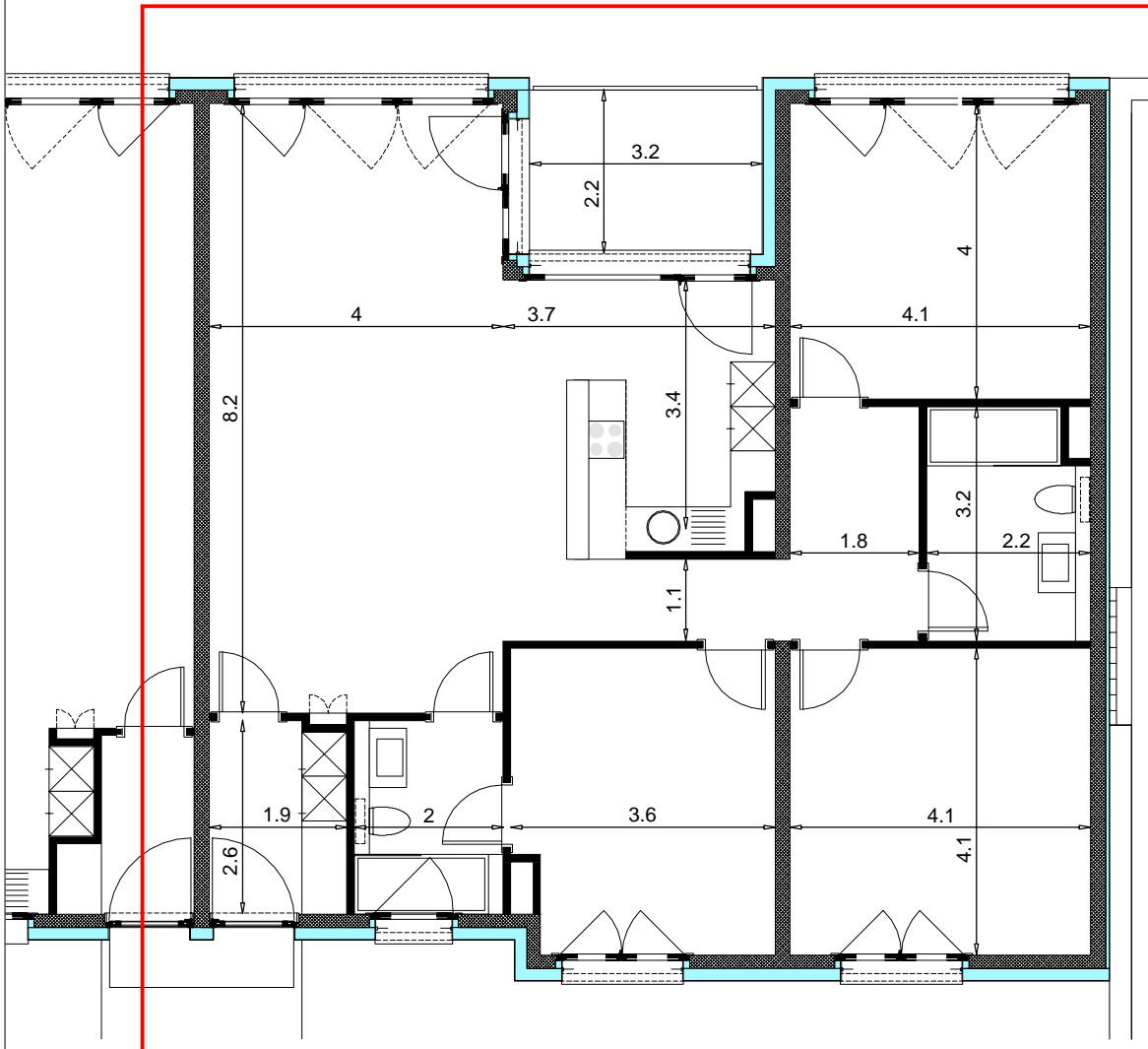


PPE N° : B10501
Appartement 4.5 pces



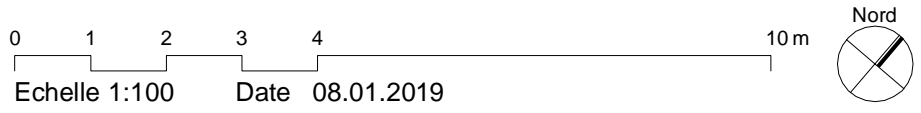
SNH	118.60 m ²
Surface Nette Habitable	
+ SCI	2.54 m ²
Surface Construction Intérieure	
= SH	121.14 m ²
Surface Habitable	
Balcon-Loggia (6.88 => 50%)	3.44 m ²
Terrasse (0.00 => 33%)	0.00 m ²
+ SE	3.44 m ²
Surface Externe	
= SVN	124.58 m ²
Surface de Vente Nette	

Date d'impression : 08.01.2019 - Format d'impression A4 (21 x 29.7)

Krüger & Kazan

LR111 _ Avenue Léopold-Robert 111

Fiche PPE



Echelle 1:100 Date 08.01.2019